

TITLE VI PUBLIC NOTICE - Town

The Town of Huntingdon does not discriminate based on race, color, or national origin in federal or state sponsored programs, pursuant to Title VI of the Civil Rights Act of 1964 (42 U.S.C. 2000d). If you need further information, please contact Martha Taylor at City Hall (731-986-2900), 12740 Lexington Street, P. O. Box 668, Huntingdon, TN 38344.

TITLE VI PUBLIC NOTICE - Carroll County Watershed Authority

The Carroll County Watershed Authority does not discriminate based on race, color, or national origin in federal or state sponsored programs, pursuant to Title VI of the Civil Rights Act of 1964 (42 U.S.C. 2000d). If you need further information, please contact Jeal Atwood at City Hall (731-986-2900), 12740 Lexington Street, P. O. Box 668, Huntingdon, TN 38344.

Newsletter Mailing List

If you know of friends or former residents of Huntingdon who would like to receive our newsletter, please send the name and address to Jeal Atwood by phone, mail, fax, or e-mail. See addresses and numbers below.

*If you have any questions, comments, or suggestions related to the Huntingdon Newsletter, please contact Jeal Atwood at P.O. Box 668, Huntingdon, TN 38344 or (731) 986-2900 or huntingdoncityhall@charterinternet.com
Website: www.huntingdontn.com*

**TOWN OF HUNTINGDON
P. O. BOX 668
HUNTINGDON, TN 38344**



See You at

The Fun on the Farm Jamboree – Every Third Saturday at 2:00 p.m.

The Fun on the Farm Jamboree is a 2-hour, live-on-the-radio, fun-filled country music extravaganza featuring great entertainers the entire family will enjoy. Come spend an afternoon at the Dixie with a variety of performers sure to delight the young and old alike! Mandy Barnet will headline the Jamboree on March 20th. Mandy played the legendary Patsy Cline in the production of “Always Patsy Cline” at the Ryman. Please note that the Jamboree in May is scheduled for the second Saturday, rather than the third Saturday. Ticket price: \$12/person. For tickets, call The Dixie Box Office at 731-986-2100. For other information related to the Fun on the Farm Jamboree, contact Kelly Green at kellywvhr@yahoo.com.

| | | | |
|--|-----------------|--------------|-----------------|
| Mayor: | Dale R. Kelley | | |
| Vice-Mayor: | Gary Hatch | | |
| | Town Council: | | |
| | Nina Smothers | Jeff Bailey | Melissa Powell |
| | Tim Tucker | John Sanders | Clarence Norman |
| Director of Public Safety: | Joe W. Parker | | |
| Director of Public Works: | Jerry G. Nolen | | |
| Recorder/Director of Finance: | Martha Taylor | | |
| Administrative Assistant: | Jeal Atwood | | |
| Executive Director of The Dixie: | Lori Neal Nolen | | |



Vol. 11, No. 1 First Quarter January - March 2010

Message from the Mayor . . .

This first quarter newsletter of 2010 is dedicated to the 2010 Census and is prepared early for a significant reason – to remind each of our citizens how important it is to fill out and mail back your census forms, which will be arriving in your mailbox in March. Returning the completed form by mail reduces the time and expense to hire census workers who must go door-to-door to collect census data. Please take time to read the census information in our newsletter. It will help to inform you about the census process and how important your participation is to the quality of life in our community and in our state.

Participation isn't just important—it's mandatory.

In March 2010, more than 130 million addresses will receive a 2010 Census form by mail or hand delivery. The 2010 Census will document the changes in our nation since the last census is in 2000. The census will also frame the future of our country and our community for the next 10 years.

During Census 2000, the mail participation rate was 72 percent as of the April 2000 cut-off. About \$85 million is saved for every one percent increase in mail participation.

Here's what you should know about the 2010 Census:

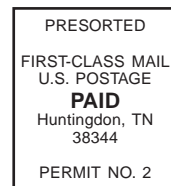
It's easy. One of the shortest census forms in history, the 2010 Census form asks 10 questions and takes about 10 minutes to complete. The individual in whose name the housing unit is rented or owned should complete the form on behalf of every person living there, both relatives and non-relatives.

It's important. Census data are used to reapportion seats in Congress and ensure proper district representation in state and local governments. Information from the census helps determine locations for child-care and senior centers, new roads, hospitals, schools and community centers.

It's safe. By law, the U.S. Census Bureau cannot share the answers you give with anyone, including other federal agencies and law enforcement entities. All Census Bureau employees take an oath of nondisclosure and are sworn for life to protect the confidentiality of the data. The penalty for unlawful disclosure is a fine of up to \$250,000 or imprisonment of up to five years, or both.

Finally, the most efficient way to respond to the 2010 Census is to complete the form as soon as it arrives and return it in the postage-paid return envelope. Census workers will visit households to take the count in person only if the census form is not returned by mail.

In March 2010 the U.S. Census will be mailing each household
a short form to fill out and return...it's important you do so!



Return Service Requested

Importance of the 2010 Census

- The census helps paint a portrait of America by showing how the country has changed over the past 10 years and what America needs for the next 10 years.
- Everyone in the United States must be counted. This includes people of all ages, races, ethnic groups; citizens and non-citizens.
- The 2010 Census is more than just a population count. It's about the future and well-being of our community and country.
- Census Day is April 1, 2010. Responses to the census form should include everyone who will be living at your address on that date. (It's not necessary to wait until Census Day to return census forms, however. Forms should be returned as quickly as possible.) People should be counted at the residence where they live or sleep most of the time.
- Households should complete and mail back their forms immediately. **Remember, we can't move forward until you mail it back!**
- Census data are used to reapportion seats in the U.S. House of Representatives and for the subsequent redistricting of state and local governments.
- Census data help to determine how more than \$400 billion per year in federal funding is distributed to tribal, state, and local governments for important social services that affect local communities like ours.
- Census data can help fund services for people in poverty, establish facilities for people with disabilities, determine locations for hospitals and senior centers, and forecast transportation needs, such as new roads and public transit options.

Important Points to Remember

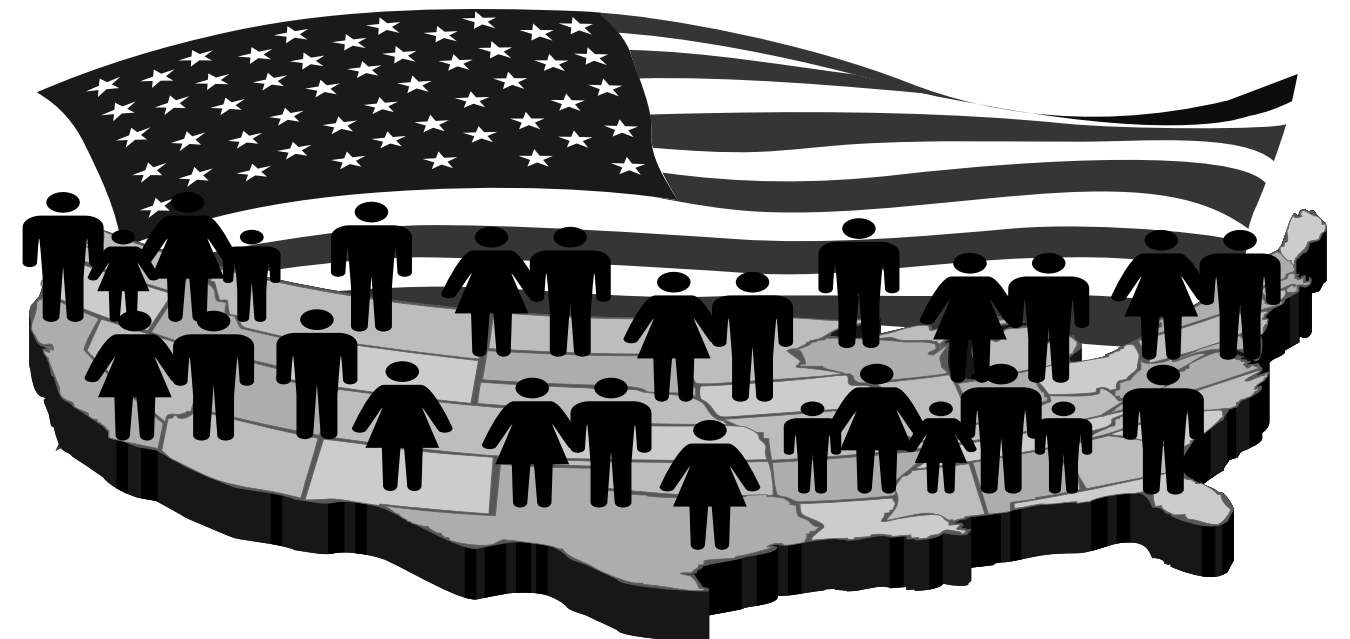
- *Completing and mailing back your census form is the easiest and most efficient method of participating in the 2010 Census.*
- *One of the shortest census forms in history, the 2010 Census form asks 10 questions and takes about 10 minutes to complete.*
- *The Census Bureau has challenged everyone in the United States to top the Census 2000 mail participation rate of 72 percent, which was the national rate as of the April 2000 cut-off.*
- *Mailing back your form is important because about \$85 million is saved for every one percent increase in mail participation.*
- *Participation is easy, important, and safe.*

EVERY PERSON COUNTED MEANS THE TOWN OF HUNTINGDON GETS MORE OF OUR FAIR SHARE IN FEDERAL SUPPORT FOR IMPORTANT LOCAL SERVICES

United States™
Census
2010

The federal government allocates more than \$300 billion to states and communities based in part on census data. **EACH HUNTINGDON RESIDENT COUNTED EQUALS \$100** in additional federal support. Our town is growing... we all need to be counted to ensure we have what we need to keep **IMPROVING** our schools, our roads, and our overall quality of life.

IN MARCH 2010 THE U.S. CENSUS WILL BE MAILING EACH HOUSEHOLD A SHORT FORM TO FILL OUT AND RETURN...IT'S IMPORTANT YOU DO SO!



2010 Census



IT'S IN OUR HANDS

THE TOWN OF HUNTINGDON NEEDS YOU TO STAND UP AND BE COUNTED!